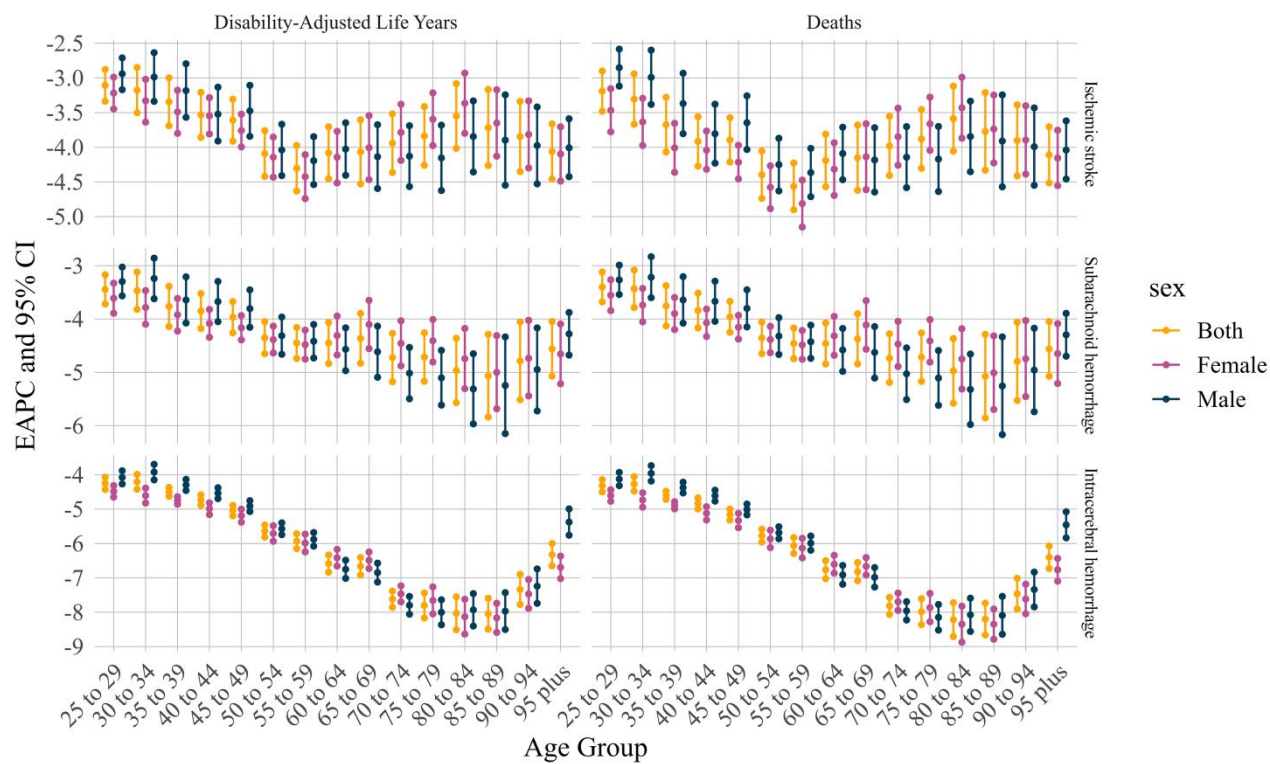
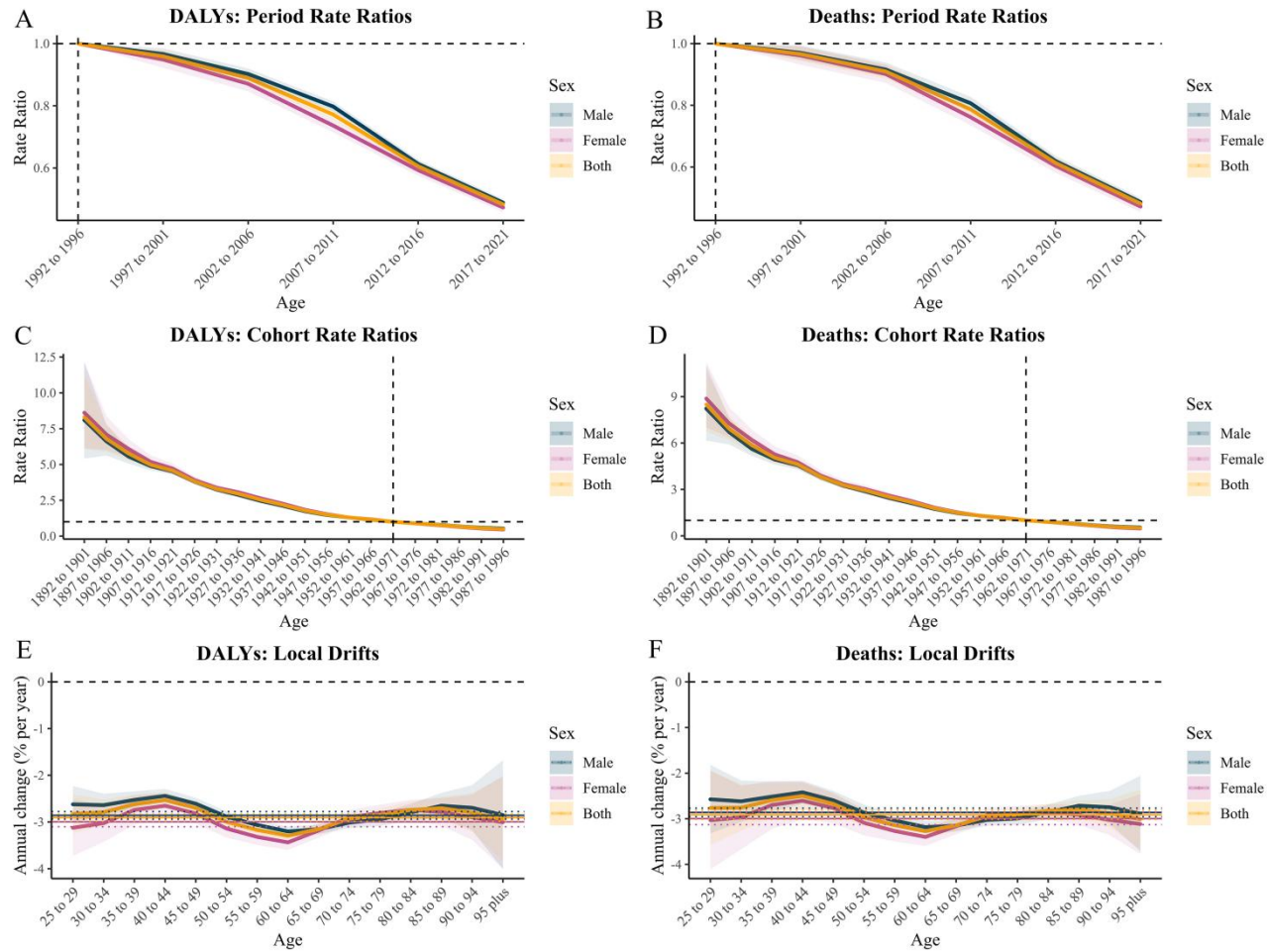


EAPC with 95% Confidence Interval for Different Causes and Measures

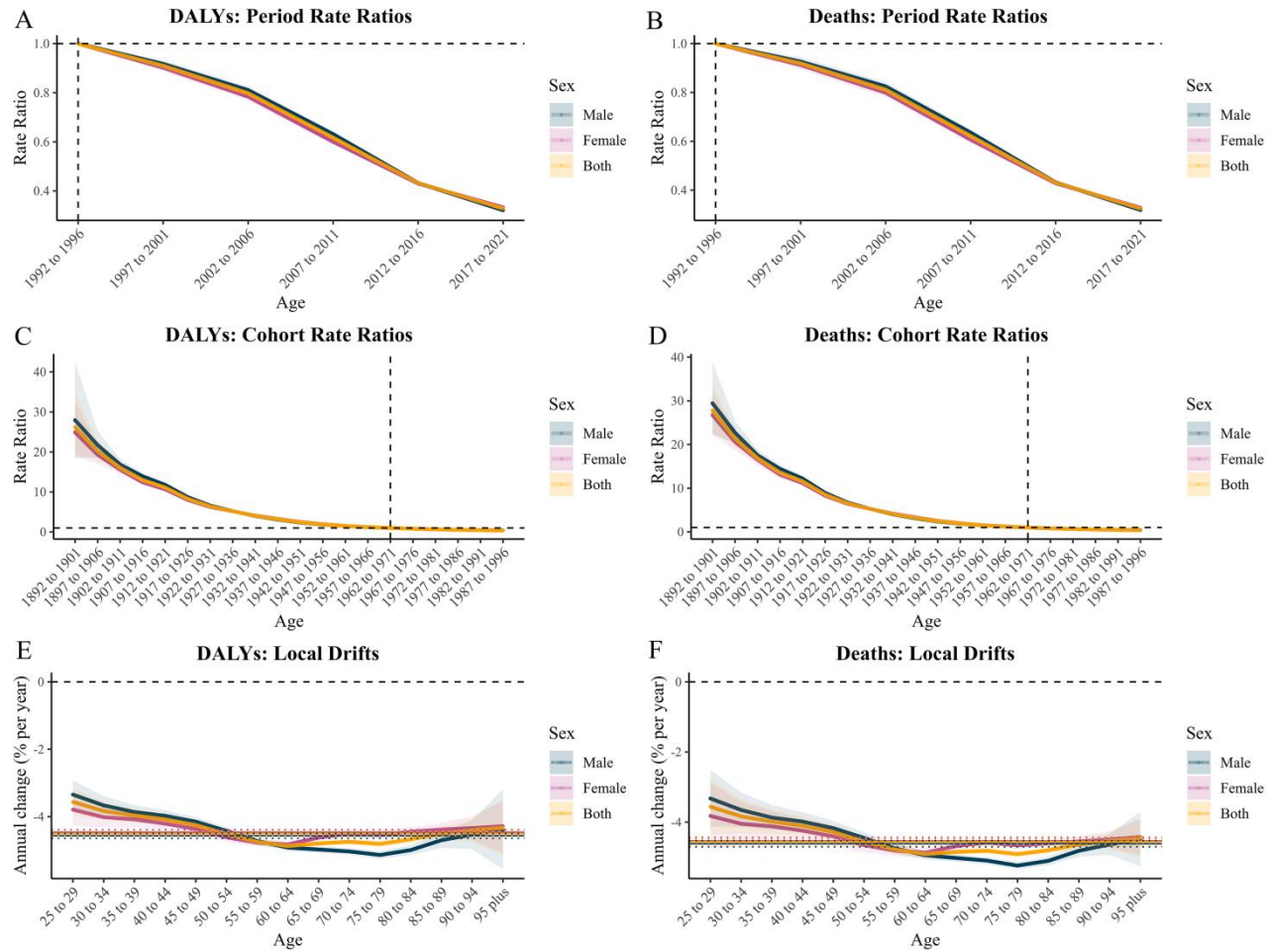
Sex-Specific Analysis for Different Age Groups



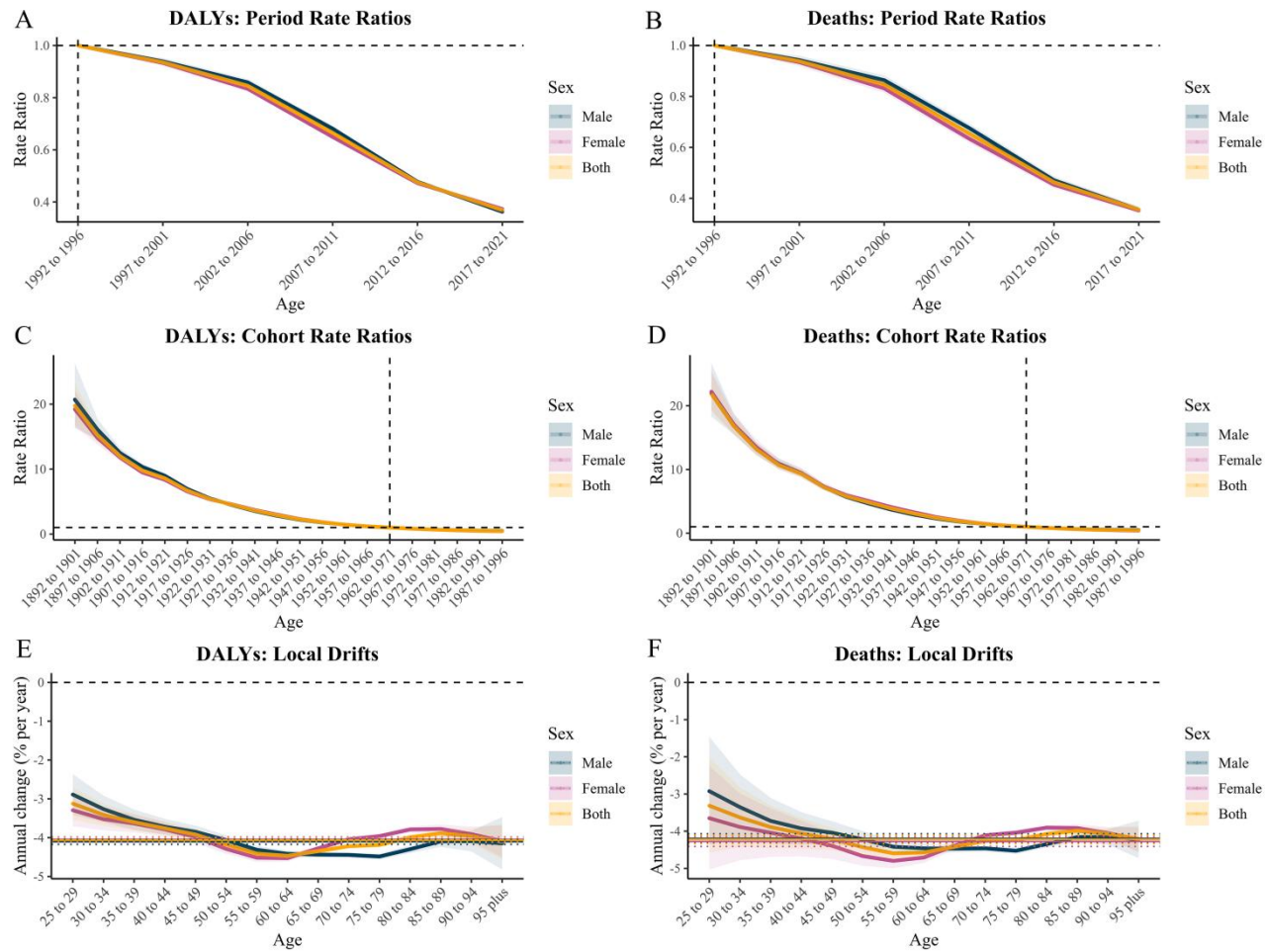
Supplementary Figure S1. EAPC in DALYs and Deaths from Strokes Attributable to HAP by Age Group and Sex, 1990–2021.



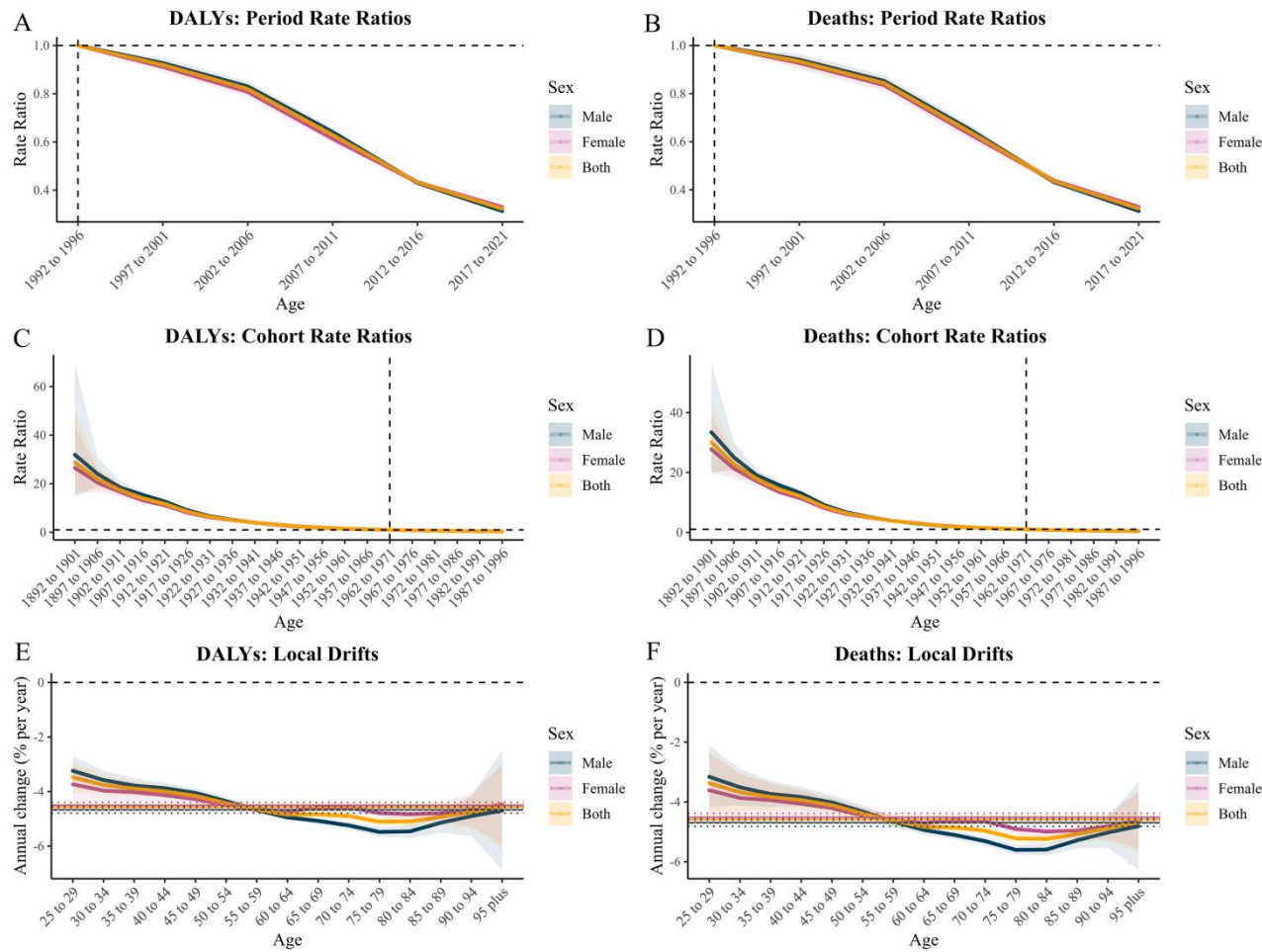
Supplementary Figure S2. Period and Cohort Rate Ratios and Local Drifts for DALYs and Deaths from IHD Attributable to HAP, Stratified by Sex. (A, B) Period rate ratios for DALYs and deaths, (C, D) Cohort rate ratios for DALYs and deaths, (E, F) Local drifts (annual percentage change in age-specific rates) for DALYs and deaths.



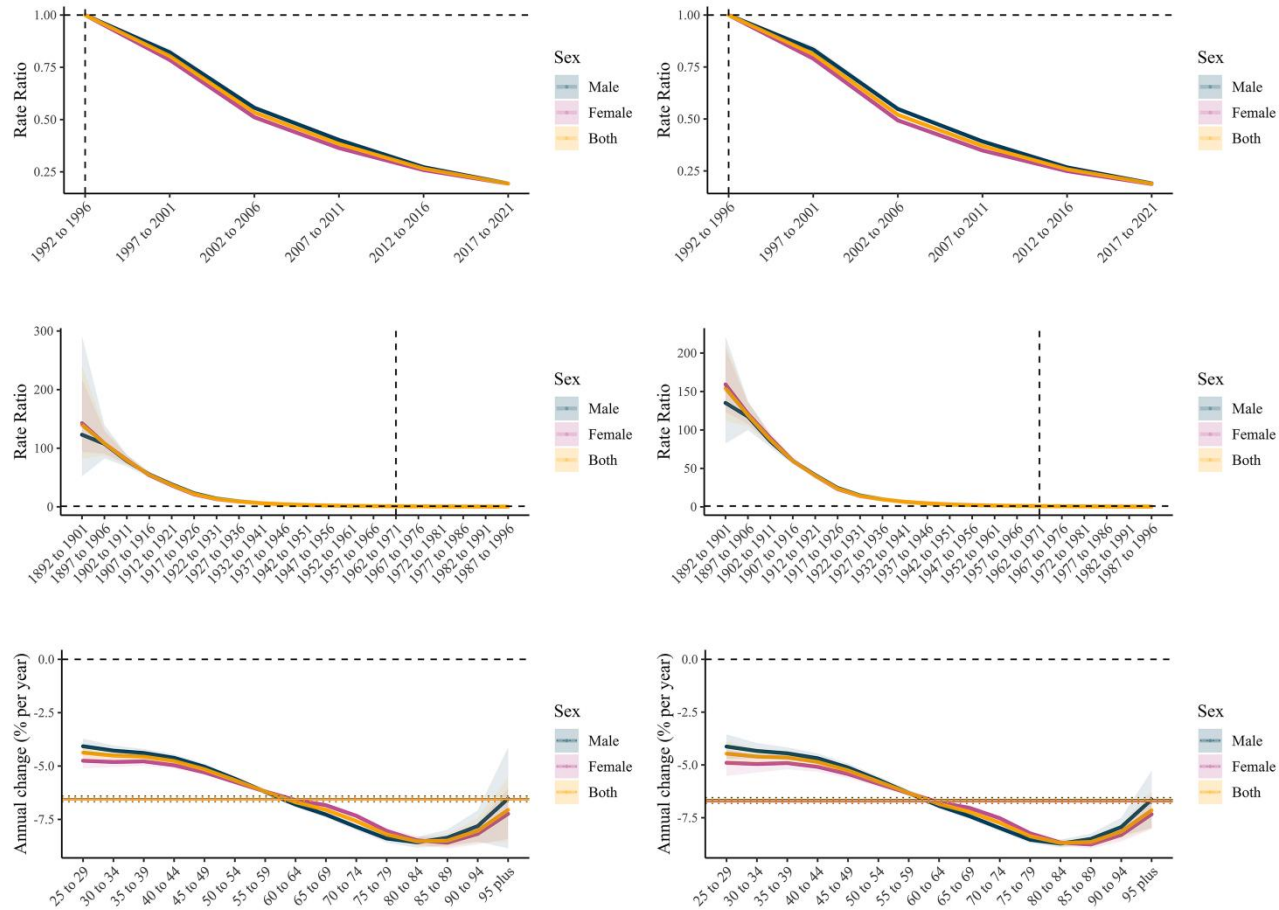
Supplementary Figure S3. Period and Cohort Rate Ratios and Local Drifts for DALYs and Deaths from Strokes Attributable to HAP, Stratified by Sex. (A, B) Period rate ratios for DALYs and deaths, (C, D) Cohort rate ratios for DALYs and deaths, (E, F) Local drifts (annual percentage change in age-specific rates) for DALYs and deaths.



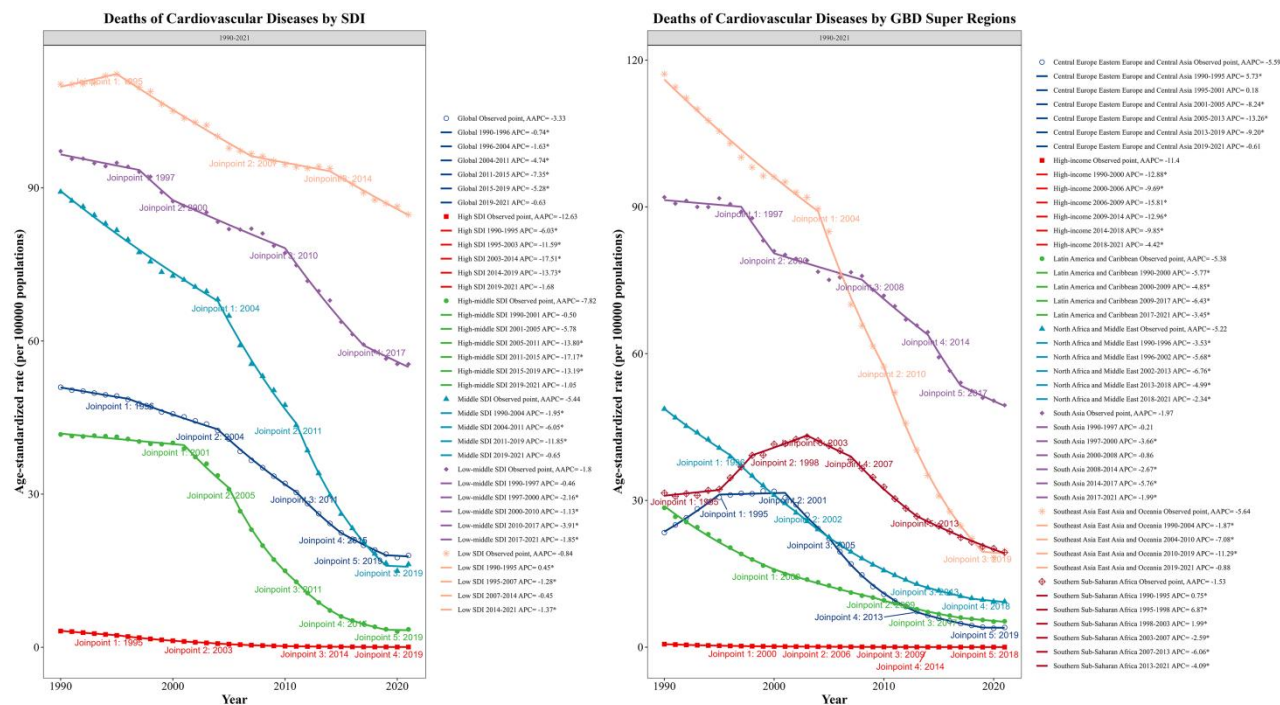
Supplementary Figure S4. Period and Cohort Rate Ratios and Local Drifts for DALYs and Deaths from Ischemic Strokes Attributable to HAP, Stratified by Sex. (A, B) Period rate ratios for DALYs and deaths, (C, D) Cohort rate ratios for DALYs and deaths, (E, F) Local drifts (annual percentage change in age-specific rates) for DALYs and deaths.



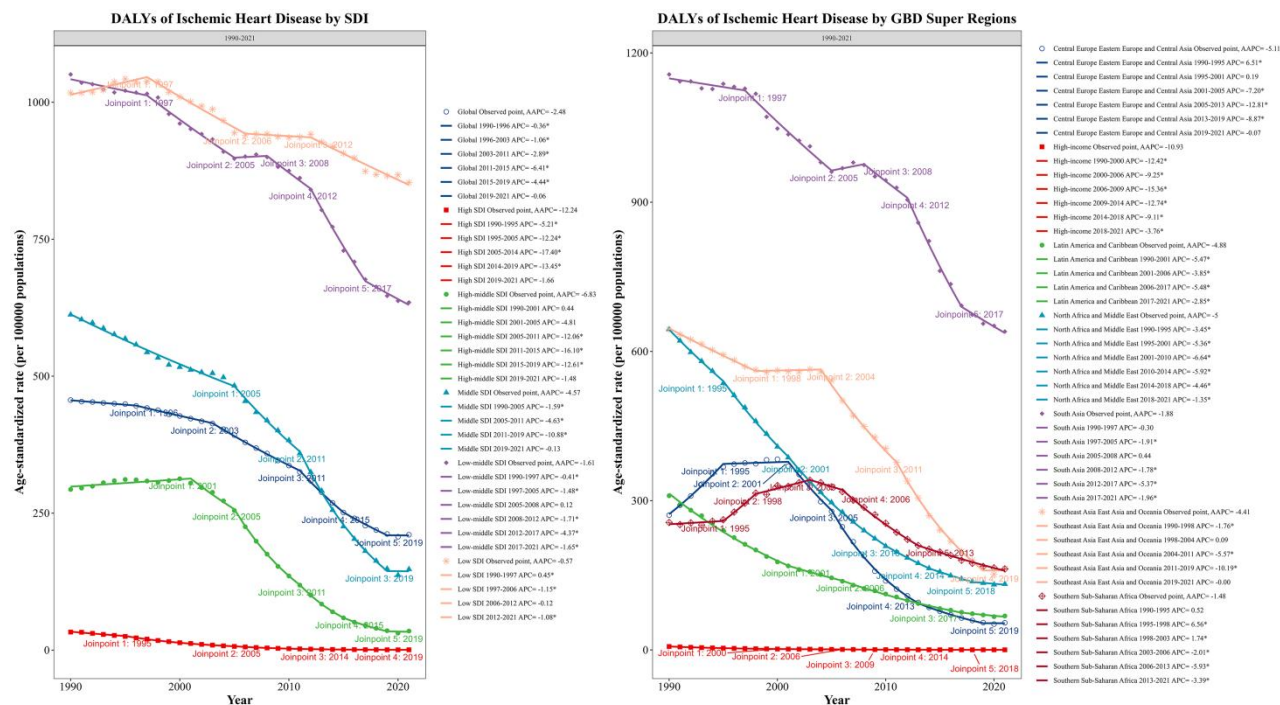
Supplementary Figure S5. Period and Cohort Rate Ratios and Local Drifts for DALYs and Deaths from Intracerebral Hemorrhage Attributable to HAP, Stratified by Sex. (A, B) Period rate ratios for DALYs and deaths, (C, D) Cohort rate ratios for DALYs and deaths, (E, F) Local drifts (annual percentage change in age-specific rates) for DALYs and deaths.



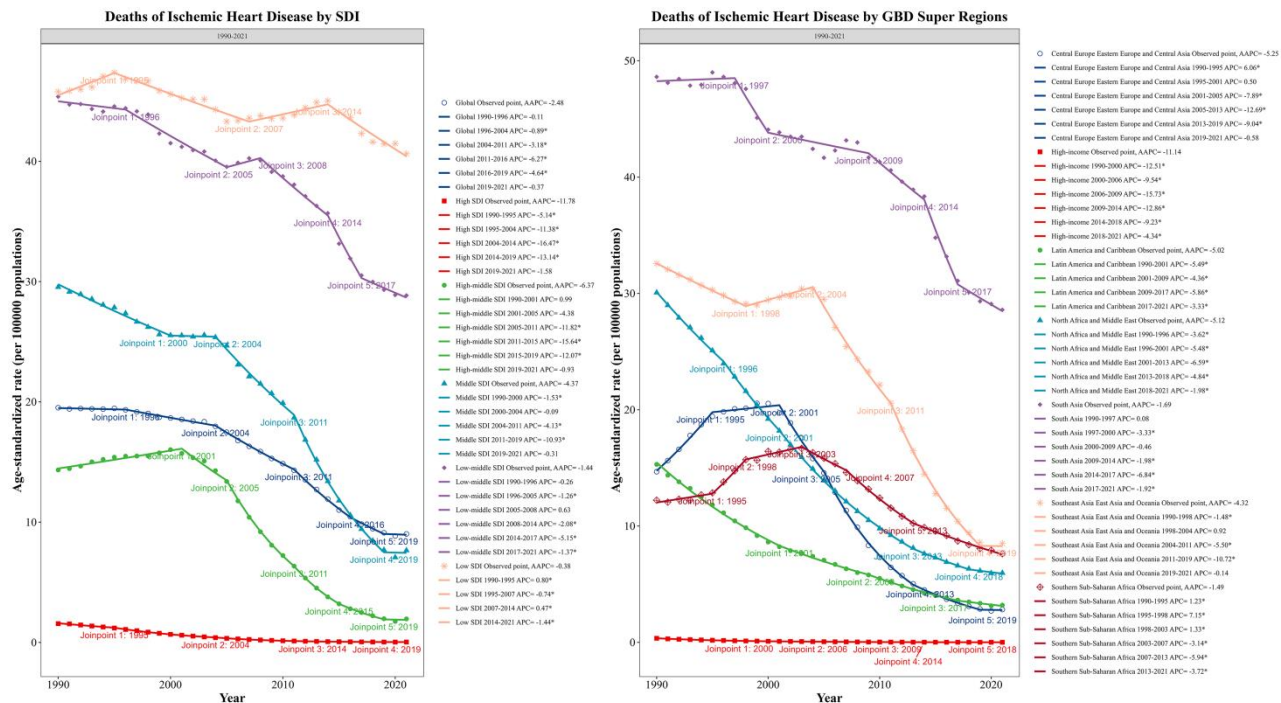
Supplementary Figure S6. Period and Cohort Rate Ratios and Local Drifts for DALYs and Deaths from Subarachnoid Hemorrhages Attributable to HAP, Stratified by Sex. (A, B) Period rate ratios for DALYs and deaths, (C, D) Cohort rate ratios for DALYs and deaths, (E, F) Local drifts (annual percentage change in age-specific rates) for DALYs and deaths.



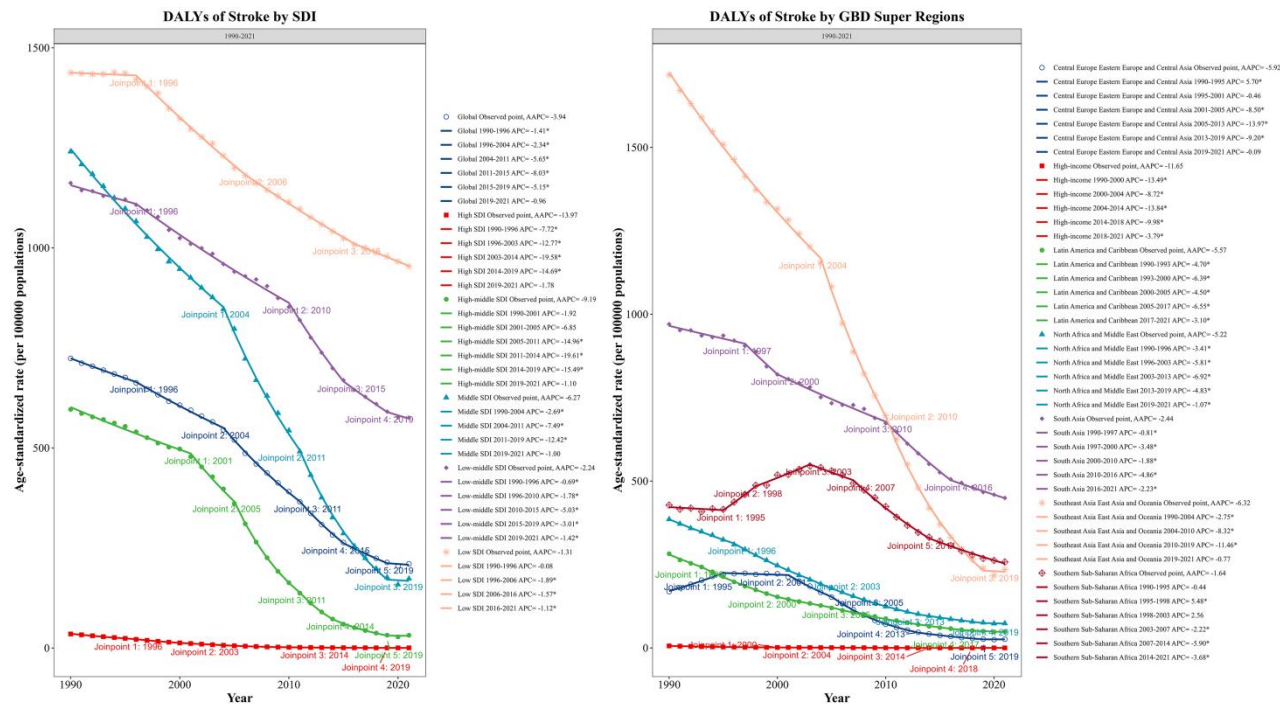
Supplementary Figure S7. Temporal Trends in Age-Standardized Death Rates for Cardiovascular Diseases Attributable to HAP, 1990–2021. (A) Joinpoint analysis by SDI quintiles, (B) Joinpoint analysis by GBD super regions.



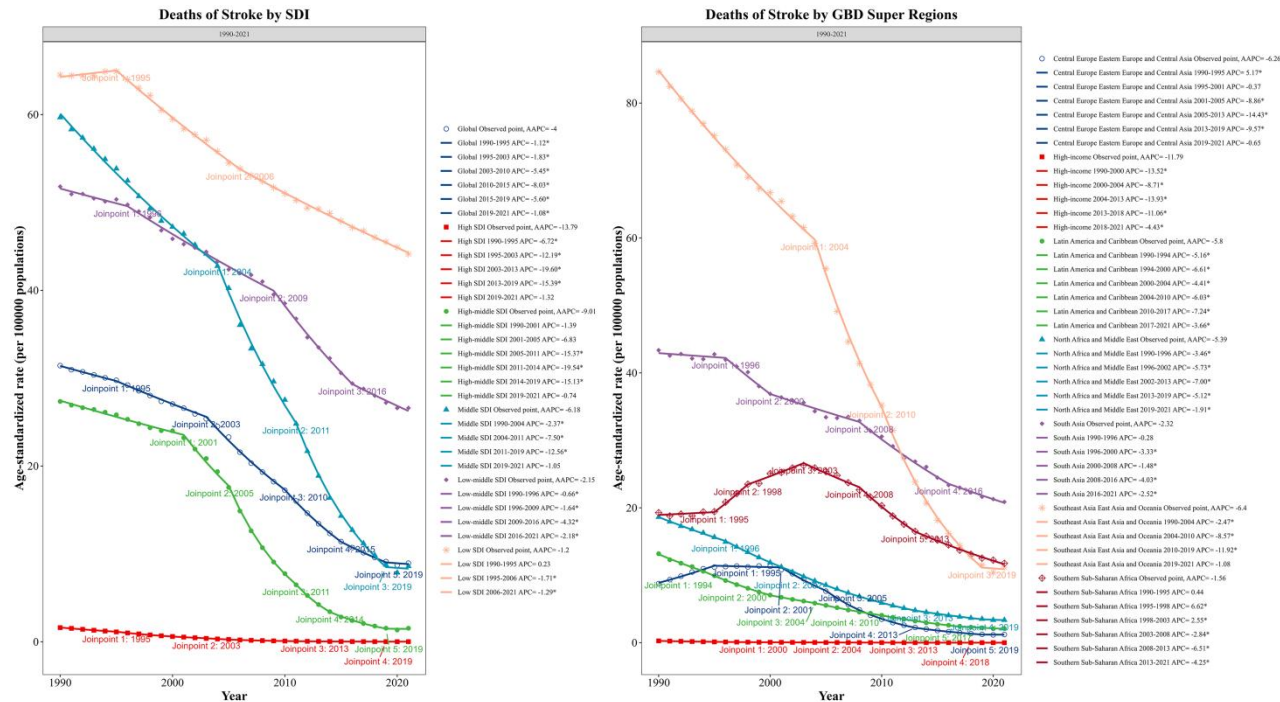
Supplementary Figure S8. Temporal Trends in Age-Standardized DALYs Rates for IHD Attributable to HAP, 1990–2021. (A) Joinpoint analysis by SDI quintiles, (B) Joinpoint analysis by GBD super regions.



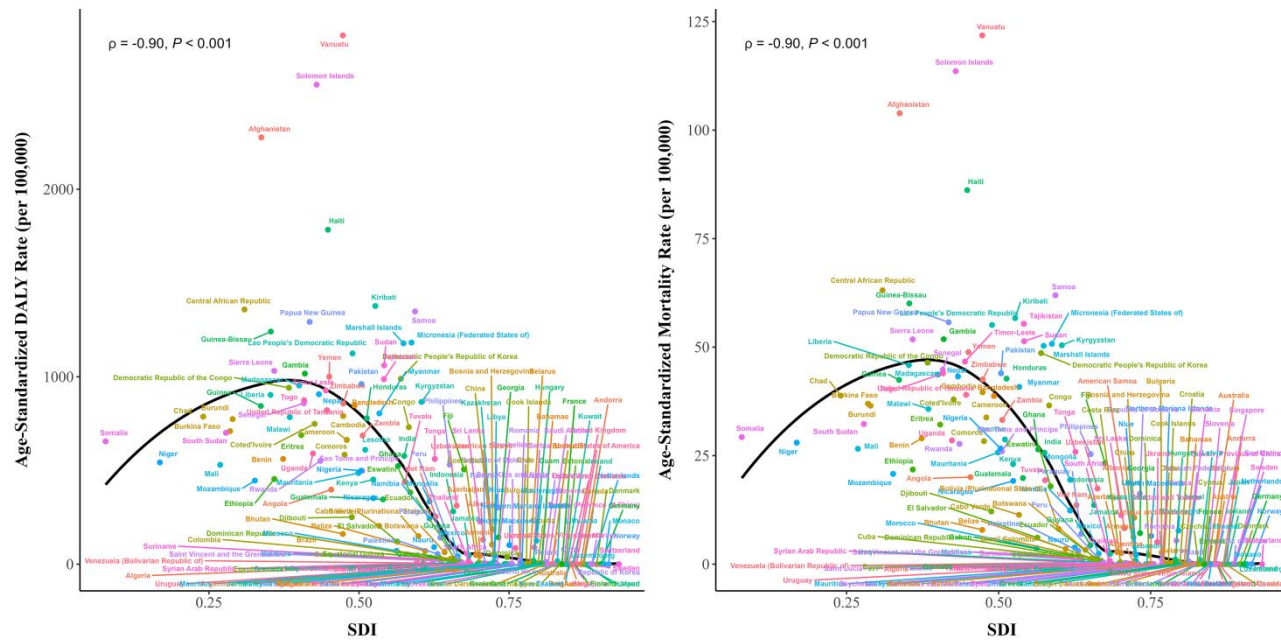
Supplementary Figure S9. Temporal Trends in Age-Standardized Death Rates for Cardiovascular Diseases Attributable to HAP, 1990–2021. (A) Joinpoint analysis by SDI quintiles, (B) Joinpoint analysis by GBD super regions.



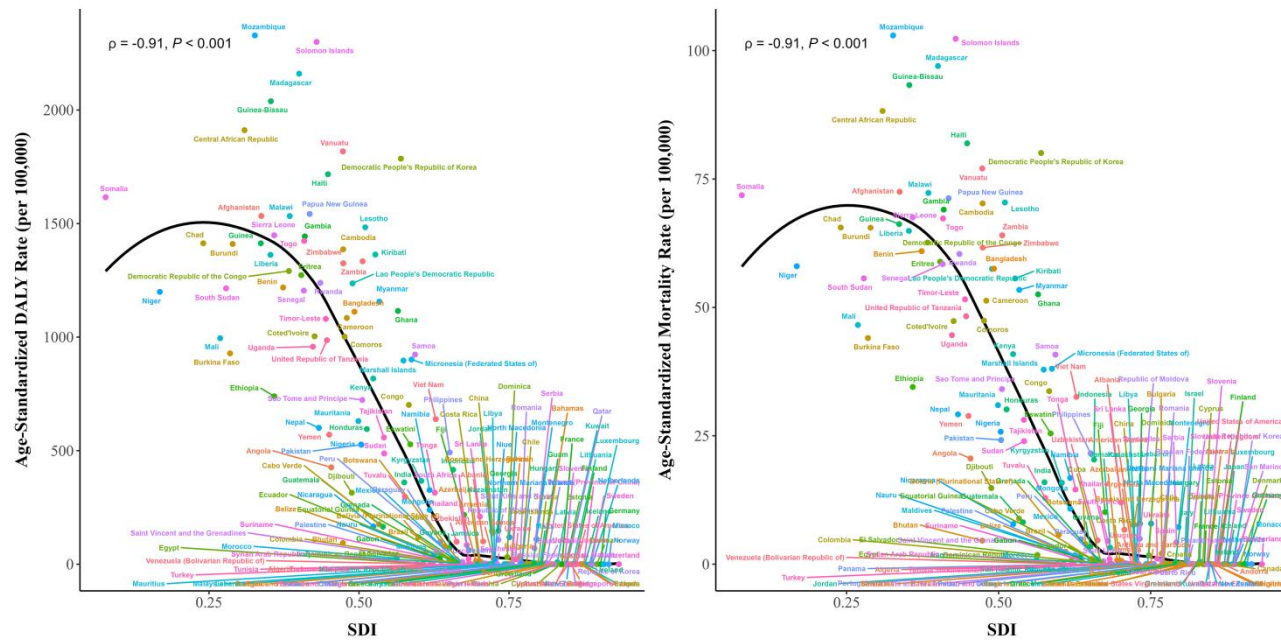
Supplementary Figure S10. Temporal Trends in Age-Standardized DALYs Rates for Strokes Attributable to HAP, 1990–2021. (A) Joinpoint analysis by SDI quintiles, (B) Joinpoint analysis by GBD super regions.



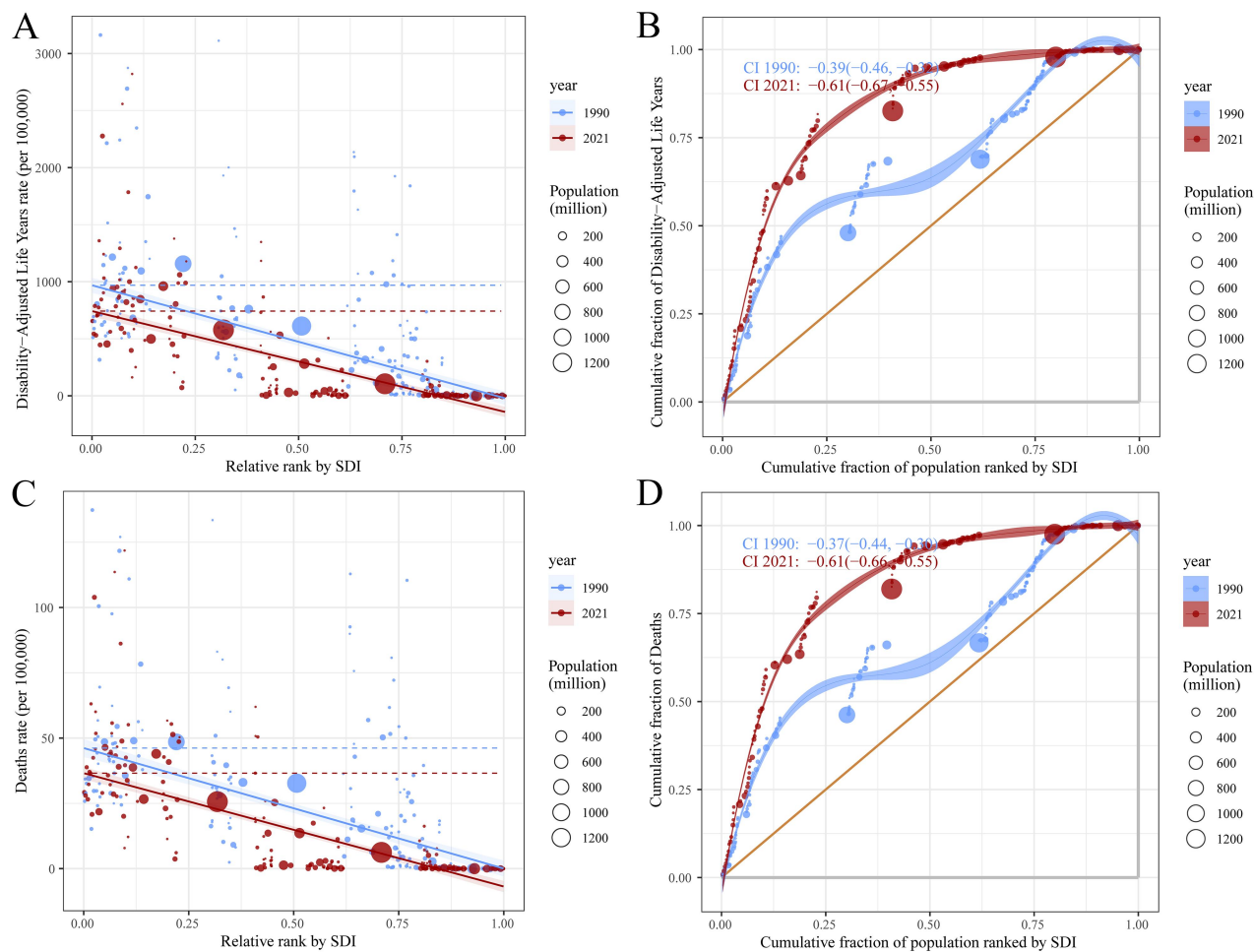
Supplementary Figure S11. Temporal Trends in Age-Standardized Death Rates for Strokes Attributable to HAP, 1990–2021. (A) Joinpoint analysis by SDI quintiles, (B) Joinpoint analysis by GBD super regions.



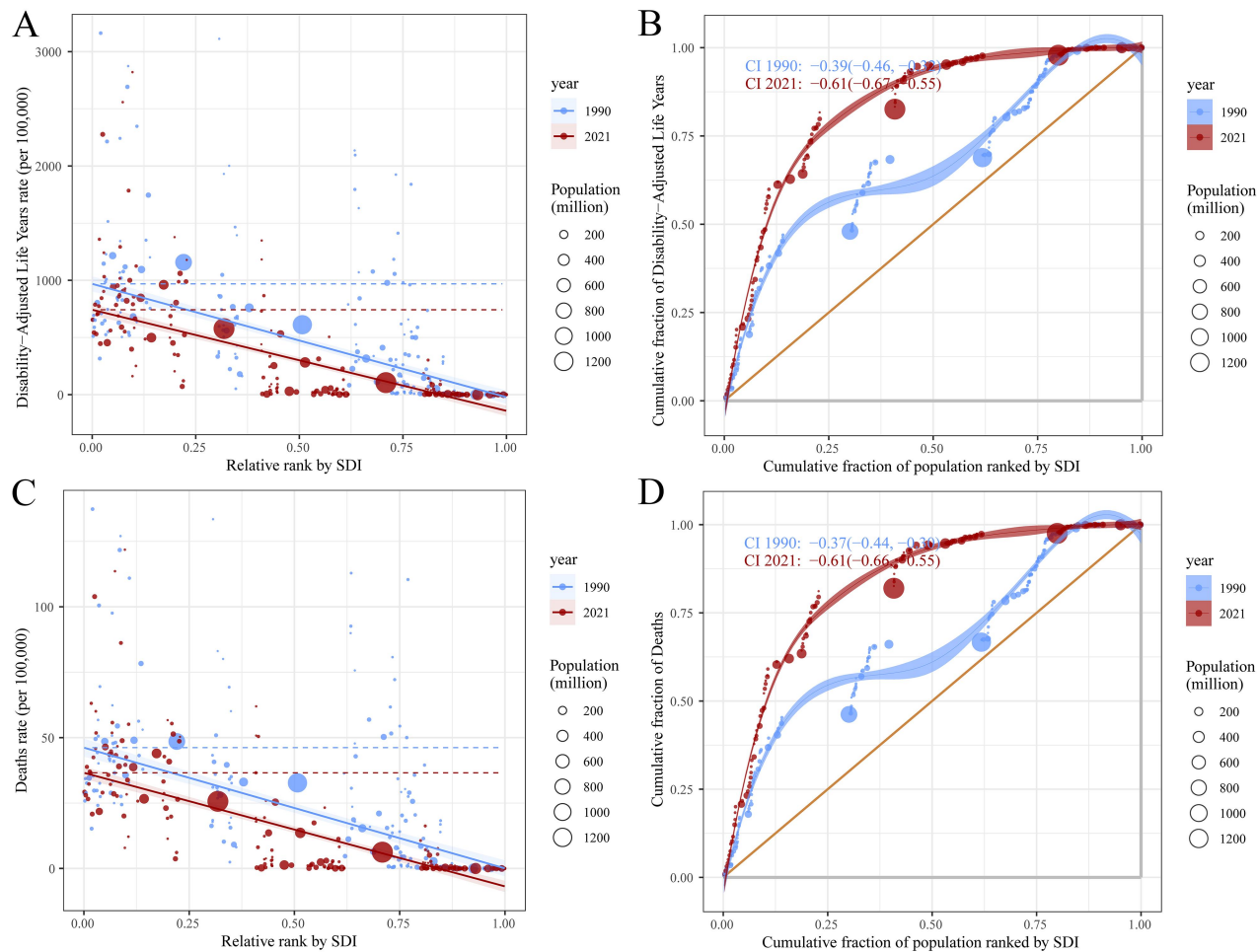
Supplementary Figure S12. Relationship Between SDI and Age-Standardized DALYs and Mortality Rates of IHD Attributable to HAP. (A) DALY rate per 100,000 population; (B) Mortality rate per 100,000 population.



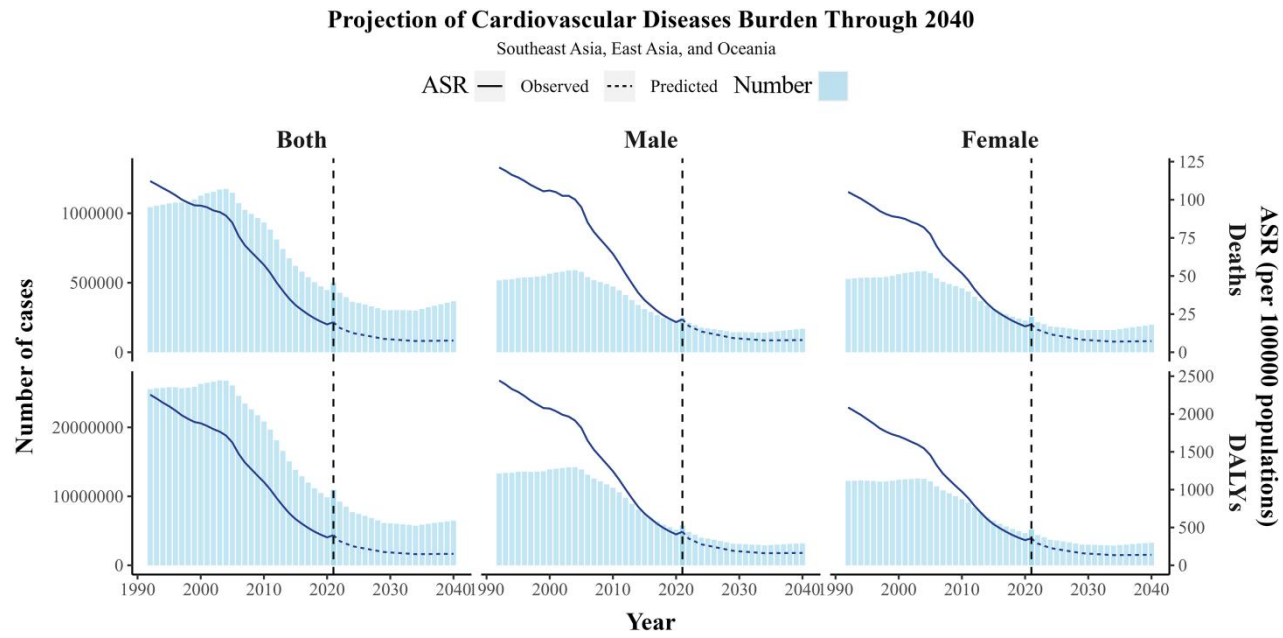
Supplementary Figure S13. Relationship Between SDI and Age-Standardized DALYs and Mortality Rates of Strokes Attributable to HAP. (A) DALY rate per 100,000 population; (B) Mortality rate per 100,000 population.



Supplementary Figure S14. Inequality Slope and Concentration Indices of Disability-Adjusted Life Years and Death Rates of Ischemia Heart Disease by SDI Rank: A Comparative Analysis Between 1990 and 2021. (A) Slope index of DALYs per 100,000 by SDI, (B) Concentration index of cumulative DALYs by SDI, (C) Slope index of death rate per 100,000 by SDI, (D) Concentration index of cumulative deaths by SDI.



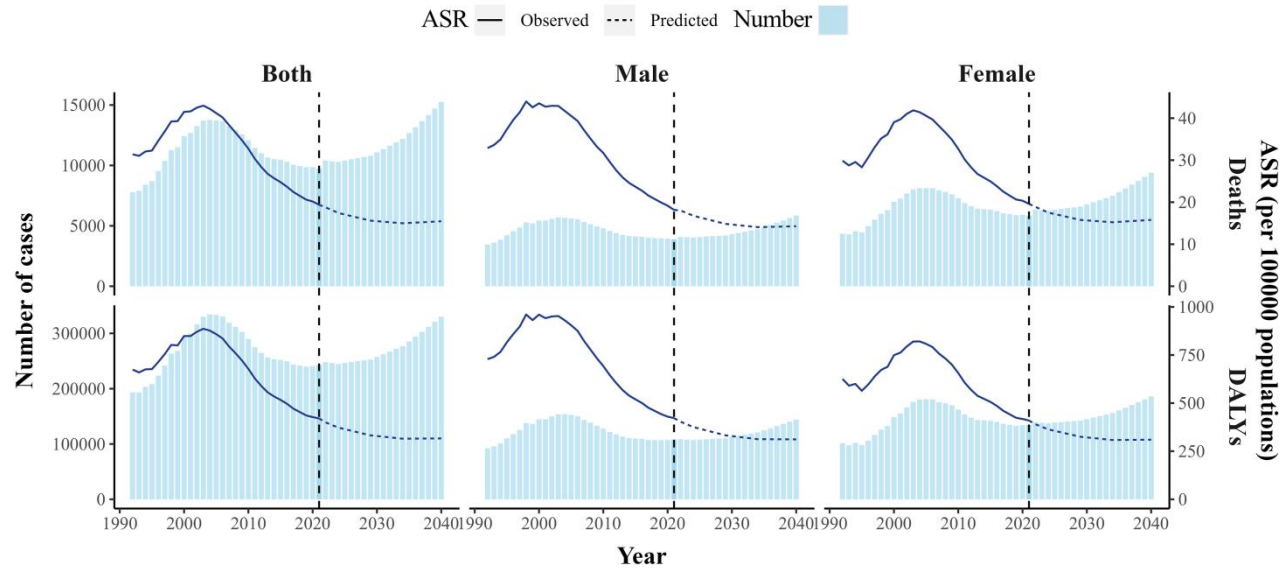
Supplementary Figure S15. Inequality Slope and Concentration Indices of Disability-Adjusted Life Years and Death Rates of Strokes by SDI Rank: A Comparative Analysis Between 1990 and 2021. (A) Slope index of DALYs per 100,000 by SDI, (B) Concentration index of cumulative DALYs by SDI, (C) Slope index of death rate per 100,000 by SDI, (D) Concentration index of cumulative deaths by SDI.



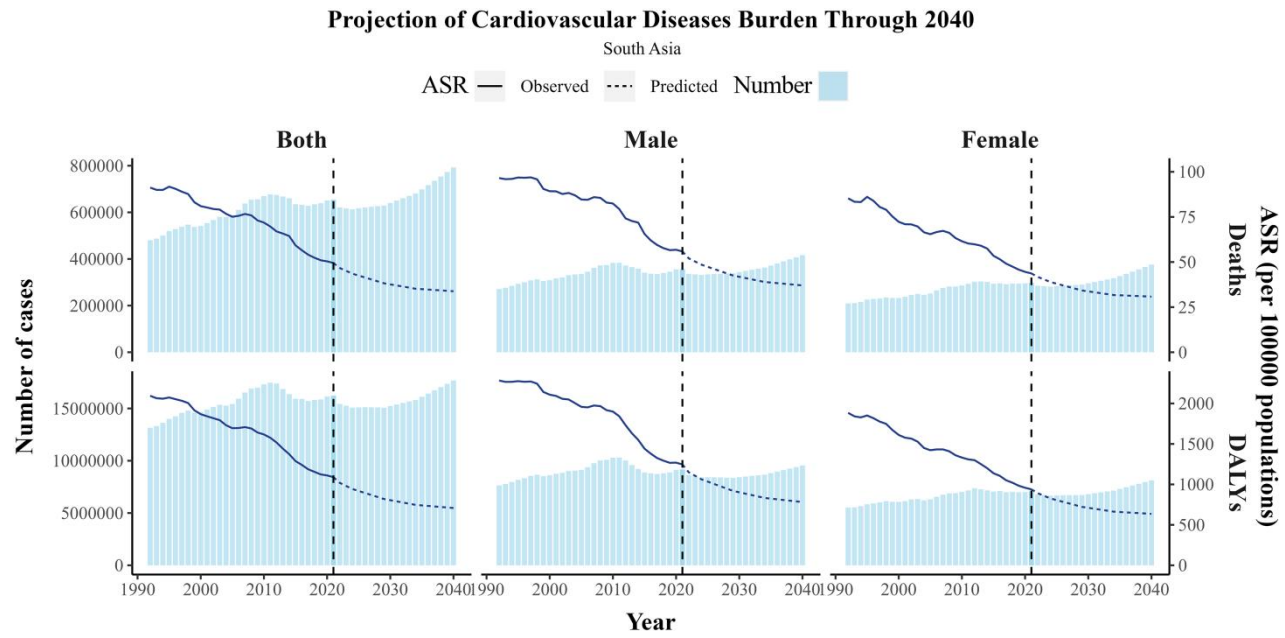
Supplementary Figure S16. Projections of Cardiovascular Disease Burden in Southeast Asia, East Asia, and Oceania Through 2040: Trends in Mortality and DALYs by Sex.

Projection of Cardiovascular Diseases Burden Through 2040

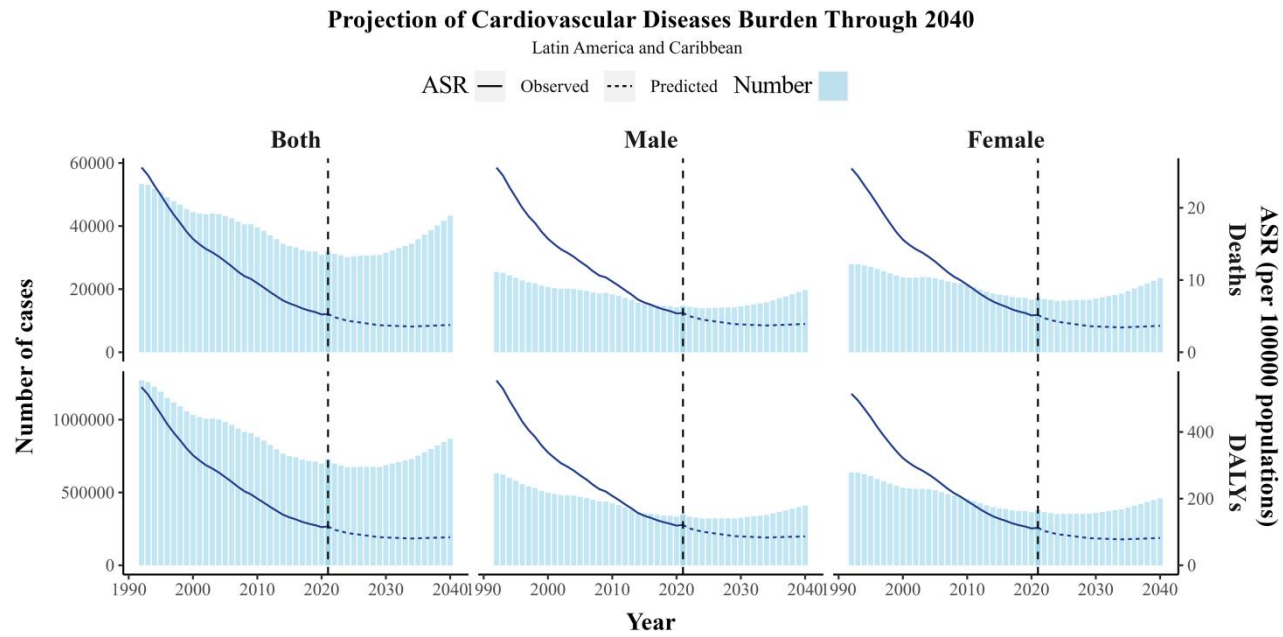
Southern Sub-Saharan Africa



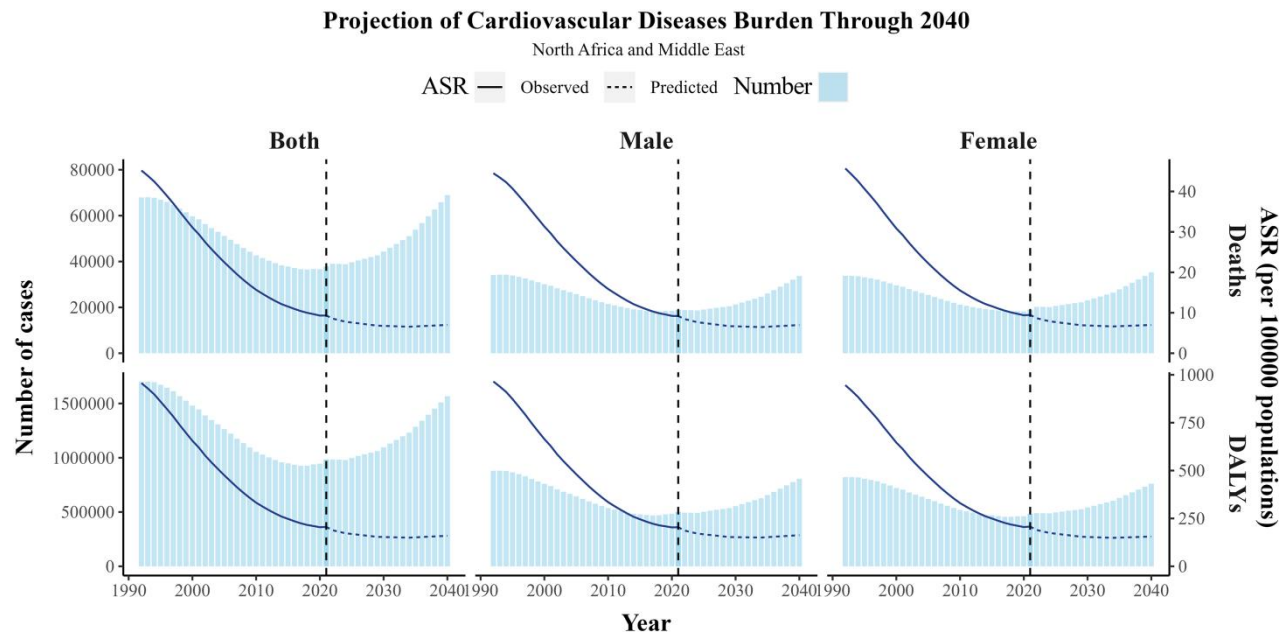
Supplementary Figure S17. Global Projections of Cardiovascular Disease Burden in Southern Sub-Saharan Africa Through 2040: Trends in Mortality and DALYs by Sex.



Supplementary Figure S18. Global Projections of Cardiovascular Disease Burden in South Asia Through 2040: Trends in Mortality and DALYs by Sex.



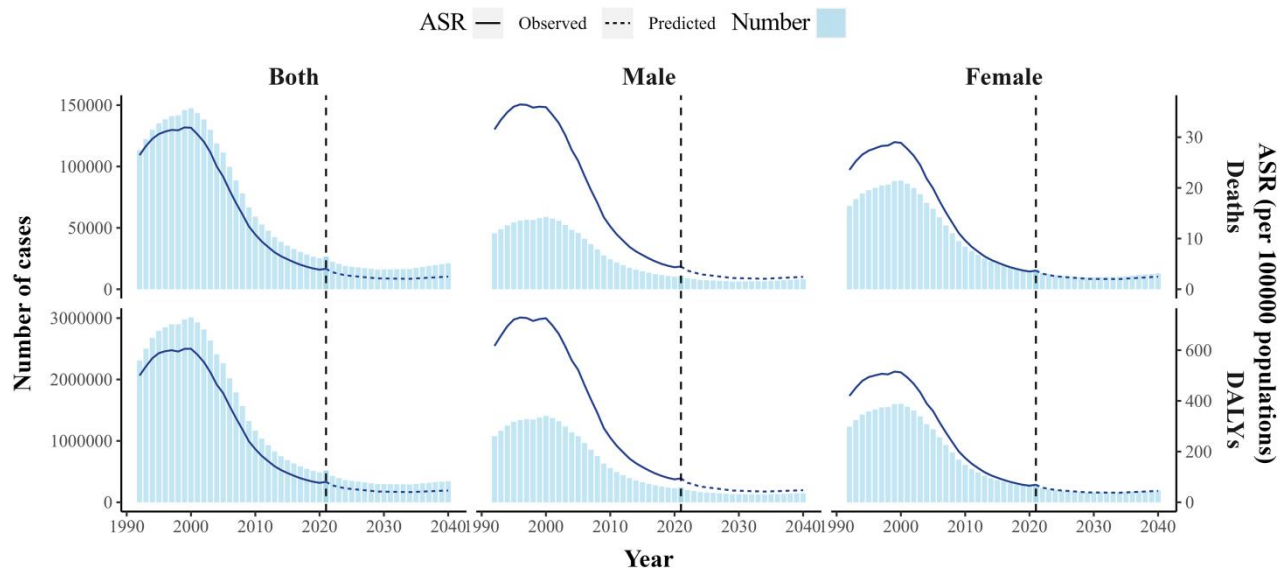
Supplementary Figure S19. Global Projections of Cardiovascular Disease Burden in Latin America and the Caribbean Through 2040: Trends in Mortality and DALYs by Sex.



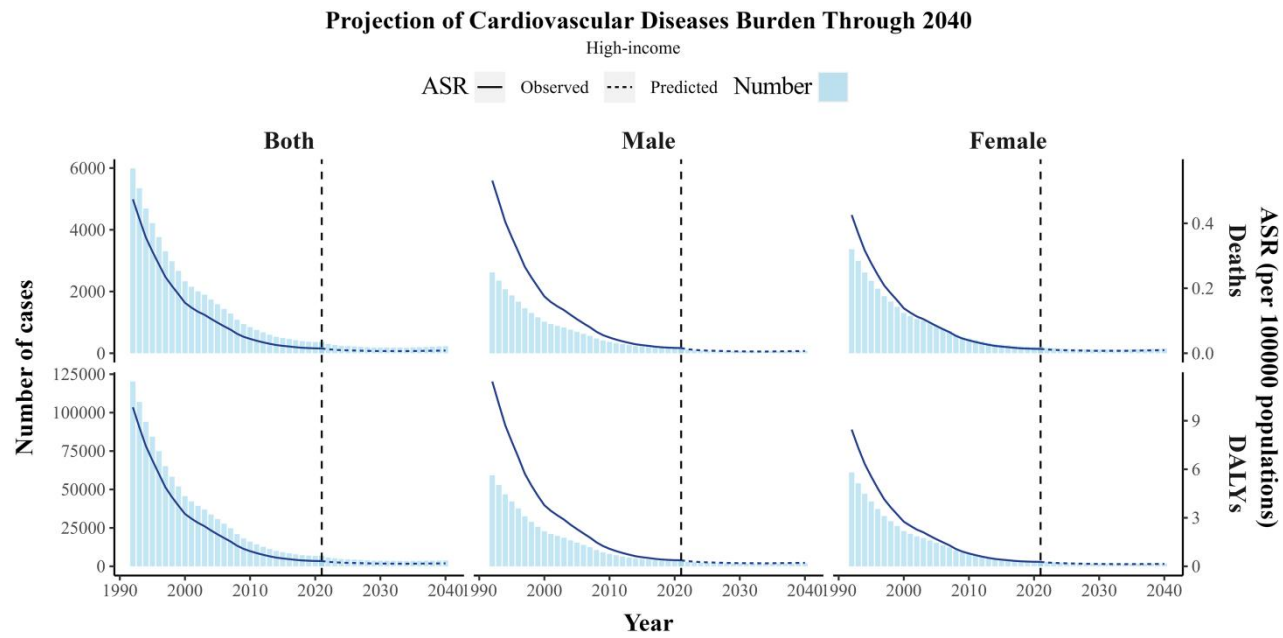
Supplementary Figure S20. Global Projections of Cardiovascular Disease Burden in North Africa and the Middle East Through 2040: Trends in Mortality and DALYs by Sex.

Projection of Cardiovascular Diseases Burden Through 2040

Central Europe, Eastern Europe, and Central Asia



Supplementary Figure S21. Global Projections of Cardiovascular Disease Burden in Central Europe, Eastern Europe, and Central Asia Through 2040: Trends in Mortality and DALYs by Sex.



Supplementary Figure S22. Global Projections of Cardiovascular Disease Burden in High-income Regions Through 2040: Trends in Mortality and DALYs by Sex.

Supplementary Table S1. Burden of ischemic heart disease attributable to HAP in 1,990 and 2,021 and its trends

Region	Number and ASR of Deaths					Number and ASR of DALYs				
	1,990		2,021		EAPC (95% CI)	1,990		2,021		EAPC (95% CI)
number (95% UI)	ASR (per 100,000, 95% UI)	number (95% UI)	ASR (per 100,000, 95% UI)	number (95% UI)		ASR (per 100,000, 95% UI)	number (95% UI)	ASR (per 100,000, 95% UI)		
Global	720,347.308 (526,576.884,96 3,466.425)	19.512 (14.158,2 6.525)	762,836.060 (412,878.659,1, 370,924.534)	9.021 (4.850,16 .301)	-2.714 (-3.103,-2 .324)	18,492,313.474 (13,766,442.721,24 ,264,678.318)	456.396 (337.878,60 3.971)	18,150,787.175 (10,274,368.805,31 ,394,757.249)	210.564 (118.902,36 5.268)	-2.737 (-3.081,-2 .392)
sex										
female	341,233.591 (247,880.742,46 5,958.047)	16.733 (12.094,2 3.114)	349,409.058 (186,124.743,62 7,914.004)	7.544 (4.033,13 .531)	-2.776 (-3.139,-2 .411)	8,078,023.609 (6,003,171.387,10, 647,532.467)	377.103 (279.677,49 9.702)	7,649,918.088 (4,316,313.303,13, 084,434.714)	167.845 (95.067,286 .062)	-2.822 (-3.128,-2 .514)
male	379,113.717 (279,328.277,50 2,975.825)	22.979 (16.713,3 0.781)	413,427.002 (221,835.648,75 3,166.601)	10.745 (5.678,19 .804)	-2.687 (-3.102,-2 .269)	10,414,289.865 (7,765,470.114,13, 706,800.699)	544.478 (402.757,72 0.278)	10,500,869.087 (5,816,617.531,18, 540,568.901)	256.594 (141.027,45 6.587)	-2.687 (-3.061,-2 .312)
SDI Level										
High SDI	17,364.341 (4,805.791,45,1 58.767)	1.563 (0.433,4. 073)	826.545 (1.413,8,008.39 7)	0.034 (0.000,0. 331)	-13.213 (-13.770,- 12.653)	359,361.424 (100,972.167,924,9 13.486)	32.986 (9.269,84.90 7)	13,263.753 (21.524,129,489.12 4)	0.611 (0.001,5.98 0)	-13.729 (-14.298,- 13.155)
High-mid dle SDI	123,995.172 (74,214.669,224 ,978.057)	14.338 (8.337,26 .602)	37,816.896 (2,716.430,185, 463.697)	1.960 (0.140,9. 624)	-7.307 (-8.497,-6 .102)	2,821,581.530 (1,749,143.482,4,8 58,260.833)	293.302 (179.214,51 3.251)	676,693.007 (48,871.619,3,316, 788.195)	34.761 (2.497,170. 710)	-7.734 (-8.914,-6 .539)

Western	25,970.722 (19,234.301,34, 156.237)	36.535 (27.021,4 7.857)	47,641.590 (32,960.081,64, 877.391)	31.149 (21.401,4 2.190)	-0.786 (-1.025,-0 .545)	598,286.496 (441,065.163,788,3 14.677)	718.086 (532.399,94 3.680)	1,116,401.626 (771,259.103,1,524 ,608.923)	600.152 (416.890,81 6.794)	-0.864 (-1.106,-0 .622)
Southern	2,849.167 (1,704.347,4,34 8.803)	12.221 (7.310,18 .634)	3,818.448 (2,231.438,6,45 5.928)	7.619 (4.319,13 .183)	-1.772 (-2.471,-1 .068)	69,406.961 (40,758.826,108,21 9.877)	256.205 (151.610,39 2.436)	94,452.673 (55,489.742,159,44 1.814)	162.709 (94.498,276 .109)	-1.707 (-2.381,-1 .029)
Central	9,180.951 (6,598.829,12,6 12.660)	53.076 (38.875,7 1.645)	16,466.736 (11,003.798,22, 286.115)	39.636 (26.903,5 3.253)	-1.228 (-1.321,-1 .134)	239,066.117 (170,574.635,329,3 66.946)	1,109.440 (804.071,1,5 08.812)	423,683.929 (279,114.737,583,2 43.380)	804.410 (539.652,1, 081.755)	-1.327 (-1.420,-1 .233)
Eastern	18,306.165 (14,082.308,22, 887.732)	29.236 (22.262,3 6.311)	39,886.511 (30,477.750,49, 418.943)	28.856 (22.136,3 5.797)	-0.273 (-0.372,-0 .173)	490,937.511 (380,009.201,617,0 54.620)	648.873 (500.858,80 7.967)	1,037,760.099 (782,089.581,1,282 ,834.393)	607.075 (461.123,74 9.949)	-0.473 (-0.575,-0 .372)
South Asia	250,669.263 (194,797.720,30 9,933.469)	48.618 (37.500,6 0.221)	382,404.592 (228,009.558,58 5,180.704)	28.590 (17.021,4 3.775)	-1.654 (-1.902,-1 .405)	7,117,355.824 (5,498,310.594,8,8 29,887.191)	1,156.796 (895.747,1,4 31.924)	9,640,008.369 (5,771,677.624,14, 711,350.772)	639.904 (381.142,97 6.678)	-1.904 (-2.145,-1 .662)
Latin America & Caribbea n	12,129.432 (6,304.155,20,6 09.938)	15.832 (8.287,26 .535)	3,627.600 (855.324,9,703. 297)	1.445 (0.342,3. 864)	- 7.645 (- 7.877, - 7.413)	291,660.932 (151,302.707,498,1 44.354)	323.467 (168.137,55 0.855)	82,769.913 (19,401.265,220,38 4.236)	32.041 (7.503,85.3 14)	- 7.502 (- 7.759, - 7.245)

Caribbean	5,262.330 (3,384.450,7,637.834)	21.605 (13.784,31.661)	5,629.137 (3,748.267,8,102.788)	10.478 (6.975,15.095)	-2.302 (-2.484,-.119)	125,847.077 (83,365.104,177,272.227)	484.035 (317.916,686.023)	141,277.480 (93,724.581,203,593.713)	264.704 (175.389,381.574)	-1.937 (-2.147,-.726)
Andean	3,120.786 (1,405.074,4,949.066)	17.129 (7.720,27.042)	1,332.872 (217.594,4,310.376)	2.353 (0.383,7.627)	-6.463 (-6.743,-.183)	68,765.251 (30,862.962,109,547.524)	337.142 (151.727,537.167)	27,230.776 (4,504.208,86,293.520)	46.220 (7.637,146.758)	-6.476 (-6.747,-.205)
Central	8,617.883 (3,713.977,16,284.923)	12.296 (5.299,23.148)	8,697.700 (2,942.582,21,818.693)	3.669 (1.237,9.211)	-3.975 (-4.067,-.884)	192,363.170 (83,431.792,359,896.033)	236.688 (102.240,444.585)	173,420.649 (60,317.384,437,061.041)	70.088 (24.311,176.486)	-4.047 (-4.142,-.952)
North Africa & Middle East										
North Africa & Middle East	43,182.643 (26,251.650,67,978.839)	30.070 (18.102,47.961)	24,438.826 (15,606.843,36,472.301)	5.968 (3.802,8.984)	-5.673 (-5.844,-.502)	1,094,001.811 (674,262.033,1,701,528.363)	644.544 (393.522,1,011.817)	637,942.286 (404,833.049,948,430.214)	132.382 (84.654,196.764)	-5.606 (-5.783,-.427)
Central Europe, Eastern Europe & Central Asia										
Central Asia	17,746.256 (8,154.106,31,881.845)	43.485 (20.053,77.919)	8,733.036 (3,447.923,19,599.572)	13.232 (5.192,29.803)	-5.167 (-6.225,-.097)	368,257.388 (166,955.124,671,812.449)	822.295 (374.520,1,492.704)	183,800.086 (73,224.574,408,356.868)	242.541 (95.821,542.066)	-5.385 (-6.479,-.279)
Central Europe	27,861.073 (6,599.069,72,915.950)	21.080 (5.012,54.954)	3,886.248 (120.731,25,520.300)	1.637 (0.051,10.750)	-9.585 (-10.270,-8.895)	564,334.130 (137,153.640,1,481,730.214)	396.234 (96.007,1,038.517)	64,293.391 (2,012.394,418,060.519)	28.592 (0.891,185.983)	-9.840 (-10.542,-9.133)

Eastern Europe	15,005.825 (3,324.103,57,128.221)	6.269 (1.377,23.738)	5,897.154 (812.485,23,323.543)	1.651 (0.228,6.518)	-6.594 (-8.258,-4.900)	283,179.466 (63,050.693,1,096,848.045)	108.663 (24.126,418.163)	100,870.734 (14,011.808,404,596.421)	28.723 (3.999,115.282)	-6.648 (-8.352,-4.912)
High Income										
Western Europe	679.047 (7.258,5,650.212)	0.115 (0.001,0.956)	31.443 (0.011,278.581)	0.003 (0.000,0.024)	-11.931 (-12.503,-11.355)	12,181.194 (133.256,101,068.104)	2.125 (0.023,17.637)	469.396 (0.165,4,120.260)	0.048 (0.000,0.419)	-12.085 (-12.690,-11.477)
Southern Latin America	3,225.342 (797.425,8,192.862)	7.722 (1.898,19.570)	170.611 (0.667,1,568.439)	0.189 (0.001,1.738)	-11.793 (-12.078,-11.507)	62,578.087 (15,524.756,161,053.372)	140.362 (34.754,360.561)	3,205.176 (12.325,29,683.345)	3.680 (0.014,34.109)	-11.617 (-11.896,-11.337)
North America	58.327 (0.006,496.057)	0.016 (0.000,0.136)	7.580 (0.000,44.739)	0.001 (0.000,0.006)	-9.358 (-9.724,-8.991)	1,054.243 (0.103,8,849.498)	0.301 (0.000,2.521)	135.313 (0.000,792.456)	0.021 (0.000,0.123)	-9.191 (-9.536,-8.845)
Asia Pacific	211.726 (11.078,1,404.452)	0.118 (0.006,0.795)	10.379 (0.001,84.046)	0.002 (0.000,0.013)	-12.681 (-13.704,-11.645)	4,370.810 (242.418,28,011.415)	2.254 (0.123,14.504)	151.633 (0.008,1,187.063)	0.031 (0.000,0.237)	-12.815 (-13.836,-11.782)
Australasia	34.892 (0.011,397.690)	0.155 (0.000,1.762)	1.606 (0.000,10.076)	0.003 (0.000,0.016)	-13.376 (-14.077,-12.670)	638.548 (0.235,7,280.204)	2.756 (0.001,31.414)	25.192 (0.000,154.757)	0.046 (0.000,0.280)	-13.425 (-14.179,-12.664)

Supplementary Table S2. Burden of stroke attributable to HAP in 1,990 and 2,021 and its trends

Region	Number and ASR of Deaths					Number and ASR of DALYs				
	1990		2021		EAPC (95% CI)	1990		2021		EAPC (95% CI)
	number (95% UI)	ASR (per 100,000, 95% UI)	number (95% UI)	ASR (per 100,000, 95% UI)		number (95% UI)	ASR (per 100,000, 95% UI)	number (95% UI)	ASR (per 100,000, 95% UI)	
Global	1,160,310.571(903,175.217,1,454,288.173)	31.430(24.473,39.503)	758,482.035(432,749.887,1,311,607.949)	8.950(5.078,15.569)	-4.462(-4.902,-4.021)	28,963,106.501(22,528,486.695,36,117,913.114)	723.735(562.979,904.582)	18,175,209.060(10,671,998.530,30,875,847.533)	210.354(123.218,358.008)	-4.377(-4.769,-3.984)
sex										
female	587,408.504(459,295.887,746,491.133)	28.525(22.186,36.448)	386,891.928(219,016.566,660,804.139)	8.343(4.732,14.219)	-4.357(-4.756,-3.958)	14,095,984.181(11,015,750.556,17,824,178.937)	658.176(514.675,832.415)	8,906,701.499(5,217,398.971,14,810,574.609)	194.849(114.426,323.258)	-4.303(-4.655,-3.950)
male	572,902.067(429,072.917,717,736.187)	35.301(26.555,44.243)	371,590.107(205,391.472,682,417.462)	9.671(5.279,17.980)	-4.608(-5.095,-4.118)	14,867,122.319(11,236,217.179,18,474,867.705)	803.072(604.001,1,000.258)	9,268,507.561(5,307,921.996,16,474,048.056)	227.291(129.249,407.061)	-4.479(-4.911,-4.045)
SDI Level										
High SDI	18,200.601(6,287.542,41,754.992)	1.615(0.557,3.706)	410.013(0.579,4,057.725)	0.017(0.000,0.169)	-15.480(-16.159,-14.795)	385,530.702(136,948.743,879,663.962)	34.975(12.437,79.828)	7,420.206(9.904,73,145.088)	0.351(0.000,3.451)	-15.649(-16.330,-14.964)
High-mid SDI	248,069.226(171,014.073,349,714.463)	27.360(18.892,39.109)	30,244.005(1,730.025,162,235.277)	1.543(0.088,8.322)	-10.156(-11.403,-8.891)	5,847,464.527(4,080,803.394,8,098,652.648)	596.417(416.455,828.842)	626,885.337(37,275.749,3,288,769.572)	31.826(1.885,167.208)	-10.247(-11.457,-9.021)

Mid dle SDI	502,678.551(3 90,101.731,62 6,205.115)	59.674(4 6.583,74 .271)	205,879.560(4 8,622.074,505, 500.199)	8.604(2. 004,21.1 48)	-6.471(- 7.236,-5. 700)	12,367,829.828(9,601,632.855,15 ,297,113.645)	1,240.636(966.933,1, 534.553)	4,519,999.516(1, 097,732.145,11,1 02,783.328)	173.180(4 1.602,425. 765)	-6.560(- 7.287,-5. 827)
Low- mid dle SDI	269,555.886(2 15,069.649,32 2,238.842)	51.805(4 1.354,62 .044)	336,675.184(2 18,677.898,47 2,608.800)	26.610(17.291,3 7.202)	-2.287(- 2.497,-2. 076)	7,112,895.963(5, 679,797.956,8,48 0,909.406)	1,162.091(930.335,1, 389.092)	8,206,283.527(5, 344,160.431,11,5 25,424.788)	575.613(3 74.994,80 8.381)	-2.390(- 2.610,-2. 170)
Low SDI	120,913.407(9 8,578.953,144, 448.017)	64.509(5 2.204,77 .209)	184,660.406(1 45,438.363,22 3,139.194)	44.123(34.662,5 3.279)	-1.360(- 1.423,-1. 297)	3,227,986.095(2, 621,681.047,3,84 3,128.021)	1,437.860(1,172.326, 1,710.975)	4,798,952.384(3, 778,917.806,5,77 4,129.289)	953.738(7 47.818,1,1 44.439)	-1.507(- 1.578,-1. 436)
GBD regi on Sout h-Ea st Asia, East Asia & Oce ania Sout h-Ea st Asia	154,522.798(1 17,218.470,19 0,794.556)	72.279(5 4.982,89 .525)	116,009.214(4 8,924.674,211, 640.345)	20.507(8.657,37 .518)	-3.995(- 4.520,-3. 468)	4,020,220.782(3, 069,787.006,4,98 0,315.479)	1,582.976(1,206.907, 1,954.425)	2,832,234.807(1, 192,815.613,5,18 4,179.711)	438.599(1 84.715,80 0.663)	-4.084(- 4.583,-3. 582)
Oce ania	1,947.723(1,39 7.367,2,551.70 4)	82.544(6 0.090,10 7.084)	3,531.771(2,4 35.464,4,703.9 50)	57.755(40.134,7 6.399)	-1.159(- 1.207,-1. 111)	56,319.661(40,0 45.671,74,859.50 9)	1,874.091(1,345.774, 2,459.250)	99,959.994(69,4 22.671,134,210.4 55)	1,297.232(905.222,1, 724.066)	-1.196(- 1.230,-1. 162)

East Asia	590,376.823(4 54,074.845,74 2,393.326)	89.675(6 9.027,11 2.485)	169,473.558(4 4,526.014,488, 282.088)	8.508(2. 188,24.5 21)	-8.018(- 8.913,-7. 115)	14,253,051.154(10,975,261.023,1 7,805,281.995)	1,767.263(1,364.502, 2,208.274)	3,581,773.734(9 88,426.693,10,14 9,211.613)	168.853(4 6.181,478. 749)	-7.990(- 8.834,-7. 138)
Sub-saharan Africa										
Western	45,993.134(34, 010.893,57,30 6.790)	62.899(4 6.177,78 .033)	64,388.413(44 ,704.917,85,65 0.504)	40.876(28.164,5 4.276)	-1.686(- 1.876,-1. 495)	1,149,147.419(8 54,224.777,1,430 ,591.388)	1,339.592(1,000.230, 1,664.720)	1,652,621.048(1, 136,346.510,2,21 5,551.479)	856.492(5 89.598,1,1 43.856)	-1.745(-1 .936,-1.5 54)
Southern	4,520.976(2,60 5.848,6,818.51 5)	19.277(1 1.224,29 .023)	5,899.856(3,6 81.326,9,520.6 02)	11.766(6.980,19 .712)	-1.645(- 2.379,-0. 904)	115,379.572(65, 299.381,177,068. 927)	428.087(24 4.502,649. 460)	148,109.035(94, 307.753,238,028. 662)	257.684(1 62.453,42 1.579)	-1.684(- 2.351,-1. 013)
Central	12,181.837(8,8 31.577,15,877. 871)	70.740(5 0.773,90 .947)	20,758.809(14 ,344.047,28,32 9.903)	51.423(35.676,7 1.691)	-1.235(- 1.369,-1. 100)	331,006.258(241 ,024.185,430,256 .309)	1,537.699(1,126.778, 1,989.480)	545,755.768(378 ,900.117,743,740 .911)	1,064.018(743.332,1, 429.109)	-1.403(- 1.534,-1. 271)
Eastern	50,309.451(40, 780.833,60,58 2.152)	80.781(6 5.848,97 .033)	72,763.255(57 ,134.479,88,65 2.838)	52.975(41.899,6 4.770)	-1.562(- 1.624,-1. 500)	1,356,740.522(1, 095,725.101,1,63 8,506.875)	1,814.582(1,475.235, 2,173.528)	1,918,740.993(1, 506,904.831,2,32 3,246.721)	1,146.296(904.361,1, 387.556)	-1.709(- 1.780,-1. 639)
Southern Asia	208,742.944(1 65,946.959,25 0,713.748)	43.361(3 4.261,52 .292)	271,516.075(1 76,561.378,38 7,474.616)	20.875(13.549,2 9.815)	-2.489(- 2.671,-2. 306)	5,578,425.760(4, 429,767.010,6,73 6,833.497)	970.187(76 9.982,1,16 8.547)	6,578,492.956(4, 297,472.518,9,39 7,013.619)	449.509(2 93.734,64 3.412)	-2.598(- 2.785,-2. 410)

Latin Ame rica & Cari bbe an											
Trop ical	13,193.005(6,6 41.945,22,798. 746)	17.361(8 .749,29. 229)	2,767.671(577 .377,7,685.934)	1.117(0. 233,3.09 9)	-8.783(- 9.114,-8. 452)	319,669.651(158 ,098.232,560,158 .615)	354.095(17 6.815,614. 810)	60,657.775(12,6 51.861,171,506.9 76)	23.731(4.9 54,67.067)	-8.806(- 9.139,-8. 471)	
Cari bbe an	4,897.337(3,44 9.973,6,524.47 5)	19.643(1 3.630,26 .243)	5,208.832(3,6 08.710,7,149.8 10)	9.730(6. 737,13.3 55)	-2.133(- 2.303,-1. 963)	123,607.455(87, 828.677,163,618. 197)	467.315(33 1.651,619. 290)	134,551.879(93, 056.561,186,149. 913)	253.462(1 75.400,35 0.302)	-1.886(- 2.080,-1. 691)	
And ean	2,677.389(1,26 8.973,4,264.17 8)	14.039(6 .611,22. 329)	856.695(152.6 07,2,657.112) 2)	1.493(0. 266,4.64 2)	-7.352(- 7.785,-6. 917)	68,439.757(32,5 17.115,109,427.7 21)	319.029(15 1.144,507. 992)	20,057.742(3,52 8.143,61,640.709)	33.493(5.9 09,103.00 5)	-7.402(- 7.829,-6. 972)	
Cent ral	4,941.573(2,16 6.332,9,200.63 2)	6.835(2. 960,12.8 85)	3,854.479(1,5 04.053,8,464.0 35)	1.613(0. 625,3.54 8)	-4.833(- 4.947,-4. 719)	121,532.924(54, 965.070,222,219. 724)	143.752(63 .919,265.1 30)	87,309.373(34,5 58.299,193,015.3 37)	34.981(13. 847,77.41 9)	-4.786(- 4.886,-4. 687)	
Nort h Afric a & Mid dle East											
Nort h Afric a &	25,702.682(16, 743.349,40,95 6.827)	18.632(1 1.885,30 .256)	13,352.194(8, 962.052,19,48 2.888)	3.366(2. 259,5.01 0)	-5.955(-6 .137,-5.7 73)	631,880.681(415 ,681.695,995,073 .255)	385.478(25 1.892,613. 157)	346,340.441(233 ,509.289,496,623 .192)	73.536(49. 732,106.6 18)	-5.822(- 6.004,-5. 641)	

Mid dle East											
Cent ral Euro pe, East ern Euro pe & Cent ral Asia											
Cent ral Asia	8,788.232(3,83 8.361,16,687.2 32)	20.781(9 .001,39. 351)	3,698.809(1,4 89.916,8,624.5 58)	5.390(2. 137,12.8 18)	-5.846(- 7.074,-4. 602)	208,283.544(90, 263.585,397,494. 682)	451.745(19 5.486,862. 457)	90,265.851(37,4 76.556,202,058.3 28)	114.098(4 6.628,260. 492)	-5.954(- 7.155,-4. 738)	
Cent ral Euro pe East ern Euro pe High Inco me	20,458.593(5,1 06.845,54,219. 637)	15.534(3 .923,40. 966)	2,723.865(89. 726,17,469.94 7)	1.130(0. 037,7.25 4)	-9.868(- 10.686,- 9.042)	402,824.762(102 ,536.165,1,086,5 56.774)	283.781(72 .444,761.9 40)	45,571.181(1,51 6.561,291,855.60 7)	19.879(0.6 60,127.61 0)	-10.046(-10.899,- 9.184)	
Wes tern Euro	7,729.245(1,56 6.199,30,671.9 04)	3.137(0. 625,12.5 58)	1,536.801(213 .930,6,948.285)	0.432(0. 060,1.94 5)	-8.981(- 10.689,- 7.239)	154,948.957(33, 687.433,599,763. 632)	58.243(12. 550,225.68 1)	30,006.715(4,33 4.879,131,983.32 5)	8.665(1.25 3,37.974)	-8.702(- 10.398,- 6.973)	
	572.914(6.353, 4,475.491)	0.095(0. 001,0.74 2)	17.754(0.006, 155.613)	0.001(0. 000,0.01 3)	-13.201(-13.891,- 12.506)	9,494.215(106.5 63,74,274.590)	1.606(0.01 8,12.573)	263.724(0.090,2, 268.730)	0.025(0.00 0,0.216)	-13.092(-13.786,- 12.393)	

pe

Sout hern Latin Ame rica	2,271.786(565. 187,5,696.084)	5.297(1. 316,13.3 01)	111.537(0.407 ,1,023.896)	0.123(0. 000,1.12 6)	-11.943(-12.200,- 11.685)	50,976.217(12,6 91.427,130,027.9 16)	112.404(27 .955,286.4 81)	2,271.194(8.546, 20,928.070)	2.601(0.01 0,23.972)	-12.048(-12.318,- 11.777)
Nort h Ame rica	12.159(0.001,9 5.420)	0.003(0. 000,0.02 6)	2.276(0.000,1 2.974)	0.000(0. 000,0.00 2)	-8.348(- 8.777,-7. 918)	242.609(0.024,1, 906.656)	0.068(0.00 0,0.538)	46.194(0.000,26 1.640)	0.007(0.00 0,0.041)	-7.988(- 8.368,-7. 607)
Asia Pacif ic	460.072(38.09 9,2,298.390)	0.246(0. 020,1.24 3)	9.557(0.001,7 2.886)	0.001(0. 000,0.01 1)	-15.093(- 16.336,-1 3.831)	10,735.658(908. 483,52,839.875)	5.416(0.45 4,26.772)	168.151(0.009,1, 209.217)	0.034(0.00 0,0.243)	-14.964(-16.258,- 13.650)
Aust ralas ia	9.899(0.003,11 0.741)	0.045(0. 000,0.50 8)	0.614(0.000,3. 942)	0.001(0. 000,0.00 6)	-12.673(-13.383,- 11.958)	178.943(0.062,2, 002.128)	0.783(0.00 0,8.769)	10.506(0.000,66. 023)	0.019(0.00 0,0.117)	-12.356(-13.114,- 11.593)
